



# FP CAPE

Family Planning  
Country Action Process Evaluation

*Social Network Study –  
The Democratic Republic of the Congo (DRC)*

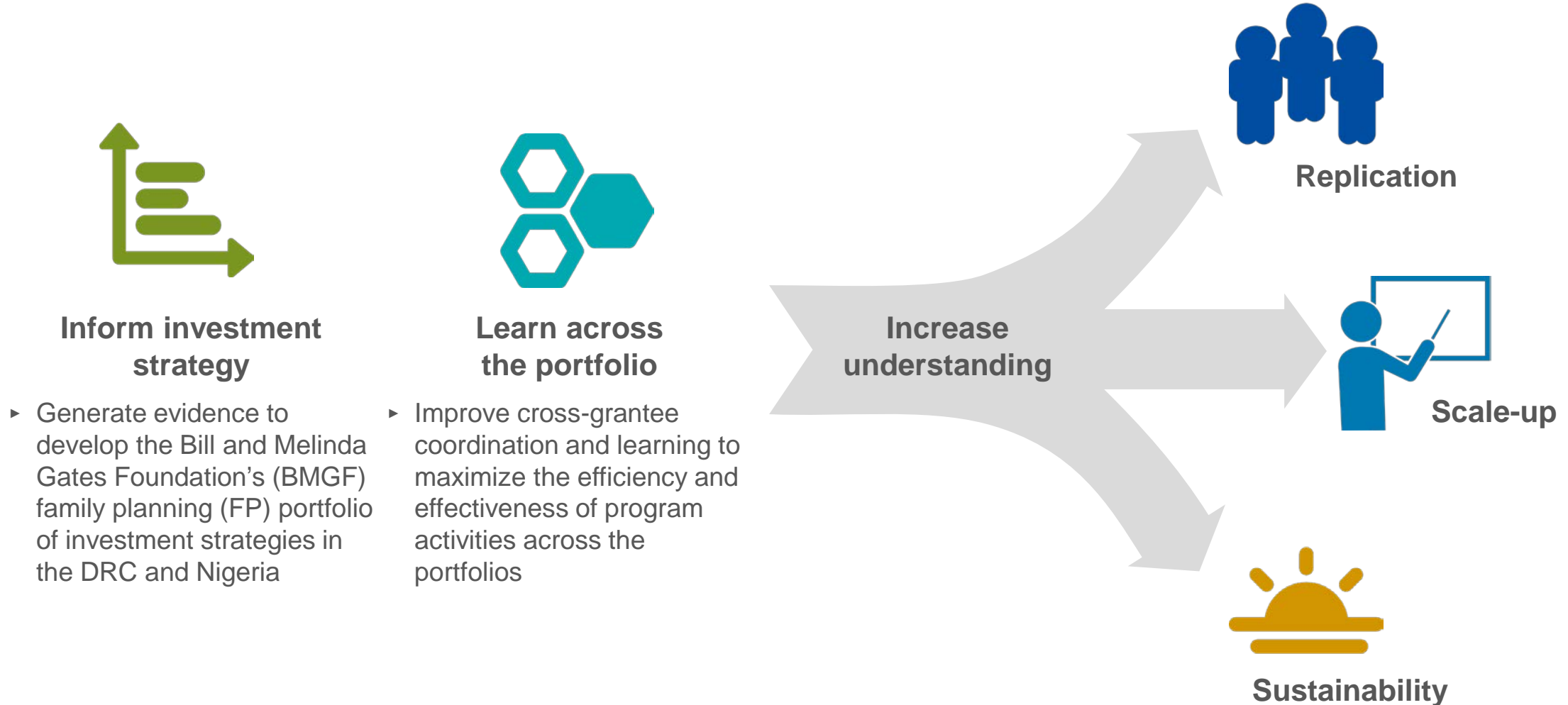
June 2018



UNC  
CAROLINA  
POPULATION  
CENTER

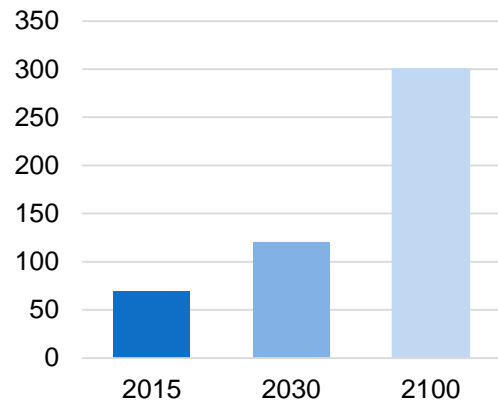
# FP CAPE evaluation objectives

*The purpose of FP CAPE is to generate evidence on how and why each portfolio of investments is/is not driving change in key reproductive health outcomes in the DRC and Nigeria.*



# Family planning in DRC

*The DRC, as one of the lowest ranked countries in the Human Development Index (176th of 188 in 2016), faces significant challenges in providing reproductive health services. Intense projected population growth and low mCPR create pressure on government & stakeholders to better address family planning needs.*



The current population is expected to almost double in size to 120 million in 2030, and to reach at least 300 million in 2100



The mCPR was just under 8% among married women nationally in 2014, up slightly from just under 6% in 2007



Since 2012, the DRC Government has prioritized FP in policy, regulations, and budget



DRC's government pledged to increase mCPR to 19% by 2020

Sources: UN HDI



# Why conduct a social networks study for FP stakeholders in DRC?

*Meeting the FP2020 national goals in the DRC requires collaboration and implication from various stakeholders groups*

BMGF is funding a variety of organizations in DRC.

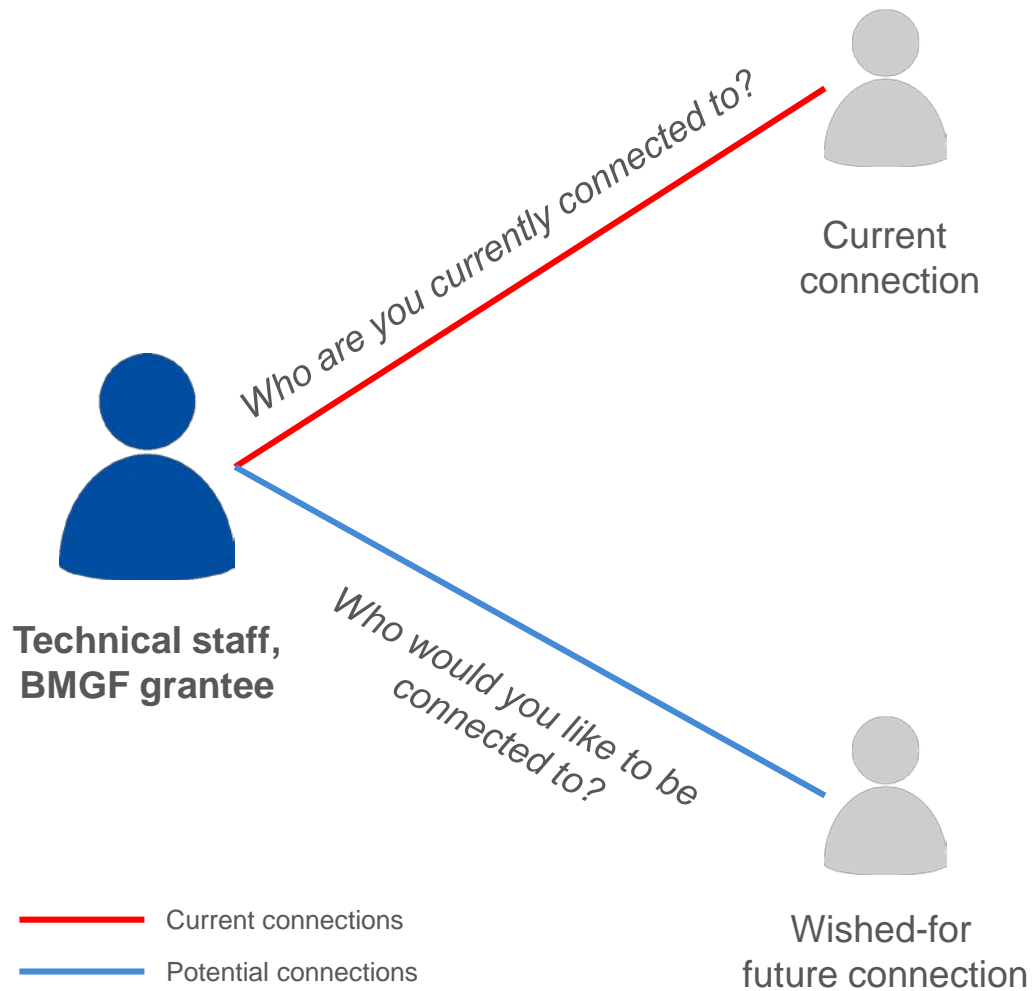
They care immensely about building gov't capacity to lead the FP agenda.

## *Questions:*

- ▶ Who are the key players in the FP stakeholder network?
- ▶ Are BMGF grantees working together? With other groups? The “right” individuals/groups/ key players?
- ▶ Is there too much scope overlap/inefficiencies or too few/ too many gaps?
- ▶ What makes connections between those stakeholders (resources vs data)?
- ▶ How can we better encourage collaboration within the network?

# Our methods and data

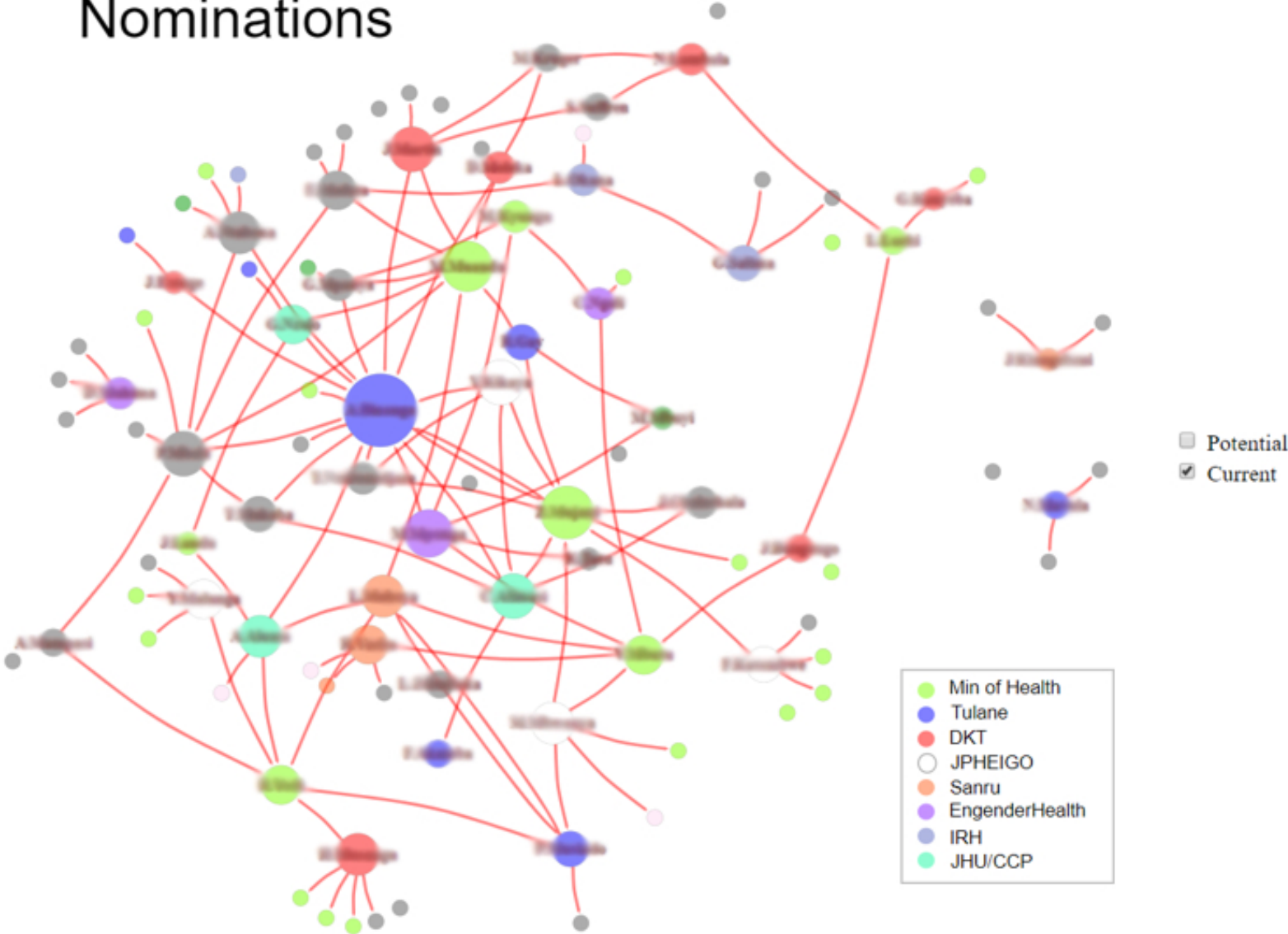
*FP CAPE collected network data to better understand FP stakeholder collaboration.*



Question	Outcome
Research frame	Bounded to BMGF-supported technical staff (primary interview)
N	32
Collection format	Individually-administered surveys
Tie(s) measured	FP stakeholder networks (current networks and wished-for connections)
Additional data identified in connections	Resource sharing: <ul style="list-style-type: none"><li>▶ Data (Findings, technical knowledge/assistance, policy information)</li><li>▶ Resources (Funding, equipment, space, access to staff)</li></ul>
Analyses	<ul style="list-style-type: none"><li>▶ Survey responses were transformed into an adjacency matrix, and connections plotted</li><li>▶ Key current and future connections were identified</li></ul>

# Current connections

## Nominations





# Who do staff most frequently list as connections?

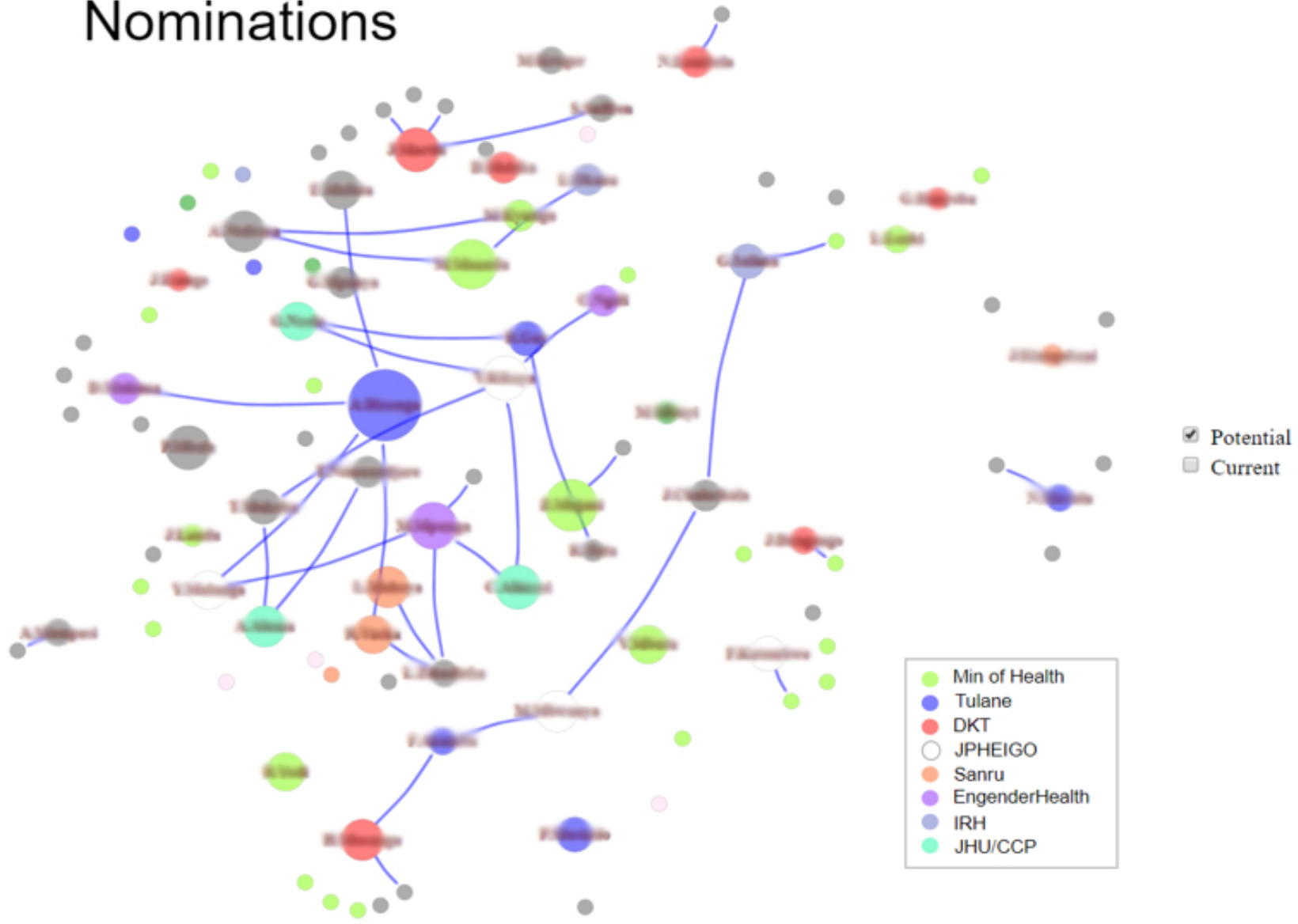
*When looking at technical staff's current connections, five individuals were nominated five or more times by other staff members.*

Individual	# Nominations	Organization
A B	12	▶ Tulane
M M	6	▶ Ministry of Health
R Y	6	▶ Ministry of Health
V M	5	▶ Ministry of Health
Z M	5	▶ Ministry of Health/Track20

*This statistic is also known as in-degree centrality*

# Potential connections

## Nominations







# Who are the most wished-for connections for BMGF grantees to achieve their program objectives?

*Technical staff nominated fewer connections for the future; the “top five wished-for” list does not mirror the current connection list. These represent opportunities for further connection/exchange.*

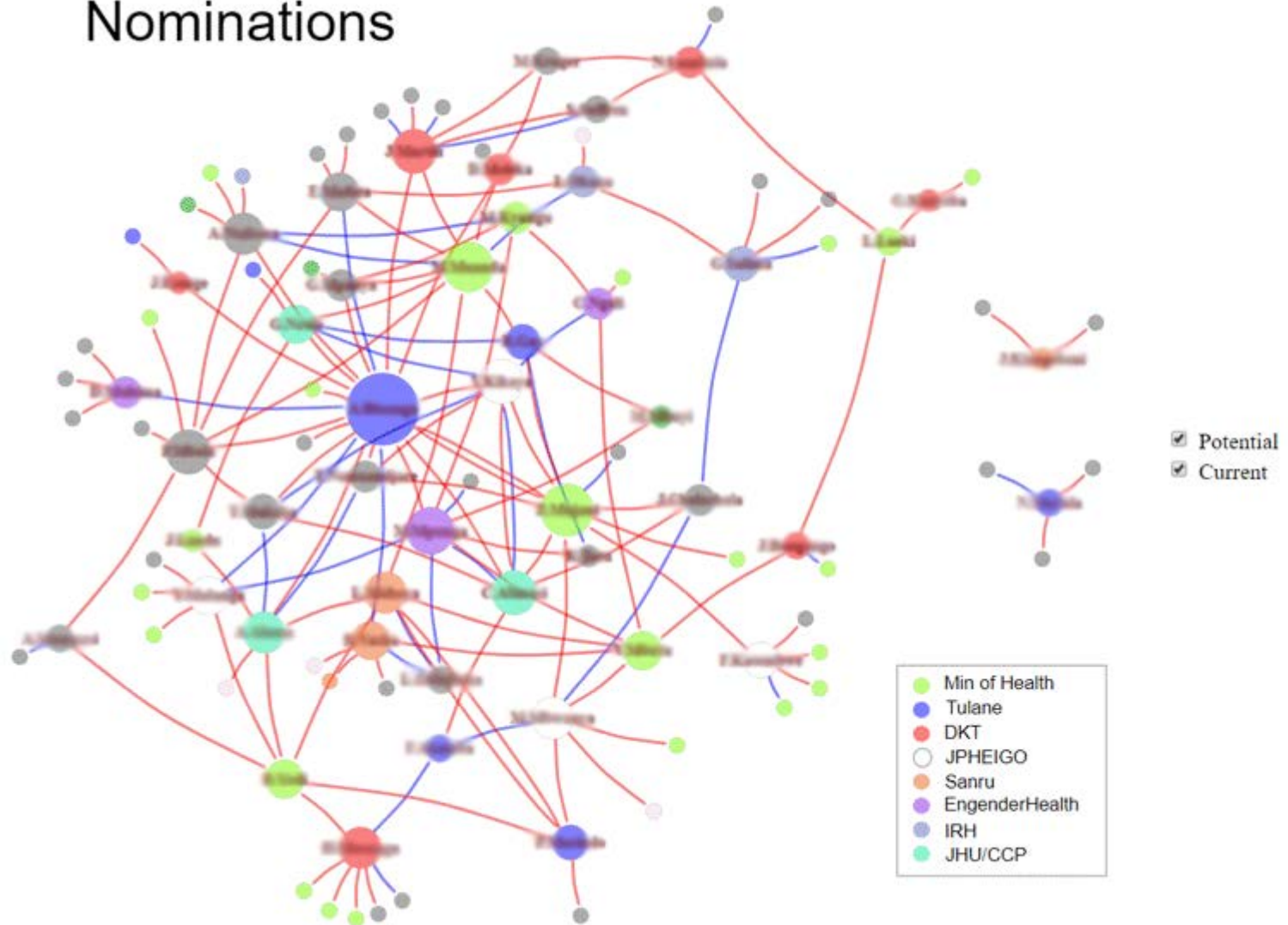
Individual	# Nominations	Organization
AB	4	▶ Tulane
VK	3	▶ JHPEIGO
FA	2	▶ Tulane
JLC	2	▶ FP CAPE
LZ	2	▶ JHPIEGO/MCSP

*AB is the only individual on both the current and potential future connection lists*

*Discussion: Why are these individuals viewed as key future connections?*

# All connections, current and potential

## Nominations





# Future analysis on FP stakeholder network in the DRC

*There are many opportunities for increasing our understanding of the stakeholder network; further analysis is ongoing and future data products may include the following.*

Topic	Future analysis	Data
Resource flow	<ul style="list-style-type: none"><li>▶ Examine the kinds of resources (data, technical, financial) that flow between BMGF grantees and other stakeholders in the network (ongoing)</li></ul>	<ul style="list-style-type: none"><li>▶ Current SN data</li></ul>
Strengthening opportunities	<ul style="list-style-type: none"><li>▶ Continued review of the FP network for specific strengthening opportunities</li></ul>	<ul style="list-style-type: none"><li>▶ Current SN data</li></ul>
Network connectivity	<ul style="list-style-type: none"><li>▶ Model shocks on the connectivity of the network</li><li>▶ Example: the impact to the network connectivity/ sustainability given withdrawal of central stakeholders</li></ul>	<ul style="list-style-type: none"><li>▶ Current SN data</li></ul>
External stakeholders	<ul style="list-style-type: none"><li>▶ Expanding further surveys to named external stakeholders</li><li>▶ Mapping full universe of current stakeholders to better understand wider context of FP in the DRC</li></ul>	<ul style="list-style-type: none"><li>▶ Snowball method, ongoing interviews to conduct</li></ul>
Dynamic changes	<ul style="list-style-type: none"><li>▶ Time-series network analysis to assess changes over time, perhaps in relation to a particular intervention</li></ul>	<ul style="list-style-type: none"><li>▶ Additional future round(s) of SN data collection</li></ul>



# Did we answer the key questions?

## *Questions:*

- ▶ Who are the key players in the FP stakeholder network?

*Yes – in a sense but from the BMGF grantee perspective. Future interviews possible*

- ▶ Are BMGF grantees working together? With other groups? The “right” individuals/groups/ key players?

*Yes – but room for improvement.*

- ▶ Is there too much scope overlap/inefficiencies or too few/ too many gaps?

*Not answered here. Undertaking a Who is Doing What Where Mapping now.*

- ▶ What makes connections between those stakeholders (resources vs data)?

*Hopefully! – see next slide on planned analyses*

- ▶ How can we better encourage collaboration within the network?

*Yes - Specific ideas generated through the aspirational contacts data*



# Discussion Questions

- ▶ What are your thoughts on how network analysis can be used to inform programs and/or policy decisions?
- ▶ Does anyone have any experience with aspirational networks?
- ▶ Any other thoughts on methods or additional analyses?